

# B<sup>ORE</sup>SITE

## *DATA ACQUISITION PLATFORM*

YOUR DOWNHOLE VISION.



# BORESITE

YOUR DOWNHOLE VISION

**BORESITE® IS A PATENTED DATA ACQUISITION SYSTEM (DAS) EXCLUSIVELY DESIGNED TO CAPTURE AND TRANSFORM WELLSITE DATA INTO VALUABLE INSIGHT FOR OPERATORS WITHIN THE UPSTREAM OIL & GAS INDUSTRY.**

## KEY FEATURES:

Our live feed data provides real-time visibility into operation(s) anywhere in the world, enabling anyone to understand on-site performance and make immediate corrections.



### ***CUSTOMIZABLE ALARMS AND DASHBOARDS***

From remote monitoring of pit levels to setting operational parameters & notifications, our fully customizable dashboard & user reports allow you to view the data that matters most - delivered the way you want it.



### ***REAL-TIME AUTOMATED PLUG TRACKER***

Our real-time automated plug tracker improves data accuracy, provides plug by plug KPIs, and eliminates pen to paper data collection during the frac plug drill-out operation.

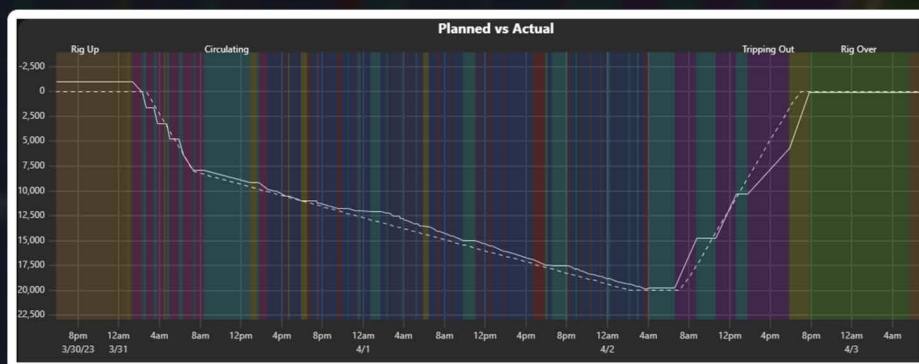


### ***BUILT-IN DATA ANALYTICS AND USER REPORTS***

Built-in data analytics providing access to current & historical well KPIs, After-Action Reviews, NPT reports, Rig comparisons, and other key data sets to drive continuous improvement.

## ***PLANNED VS. ACTUAL (PVA)***

Our BoreSite® Planned vs. Actual (PvA) KPI feature allows your team to make immediate onsite improvements by comparing historical data vs your current operations in real time.





## JOB PLANNER

By analyzing our database with **4,000+ historical wells**, we have developed true KPI benchmarks that are plotted & trended against **real-time** KPI data, creating a proactive approach to **increasing wellsite efficiencies**.

### PUMP ON/PUMP OFF TIME

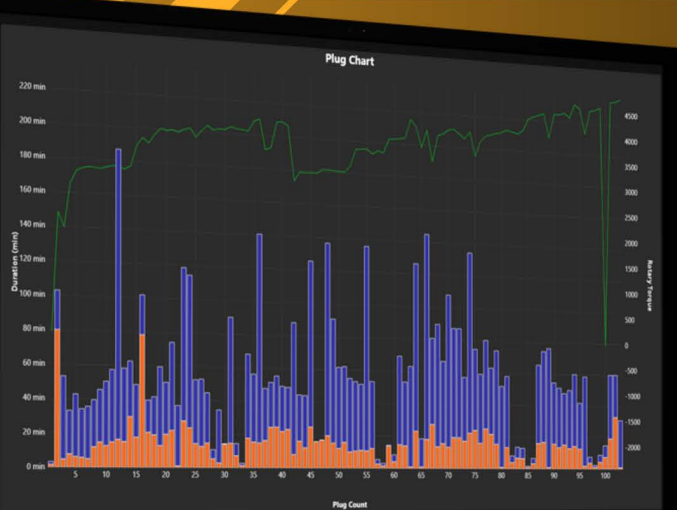
Optimize tubing connection times with auto-detection.

### TOTAL DAYS ON PAD VS. DEPTH

Measure well progress versus historical analytics.

### CREW KPI TRACKING

Compare KPIs between day & night shifts.

**WELL A**
**WELL B**
**5.5 DAYS  
ON WELL**
**4.5 DAYS  
ON WELL**


## BORESITE® PLUG SHEET

We deliver accurate certified plug data to drive new drill-out efficiencies.

### REDUCE PAPER TRAIL

Maintain all historical and present plug data within our digital records to minimize paper trail.

### IMPROVE PLUG DATA COLLECTION ACCURACY

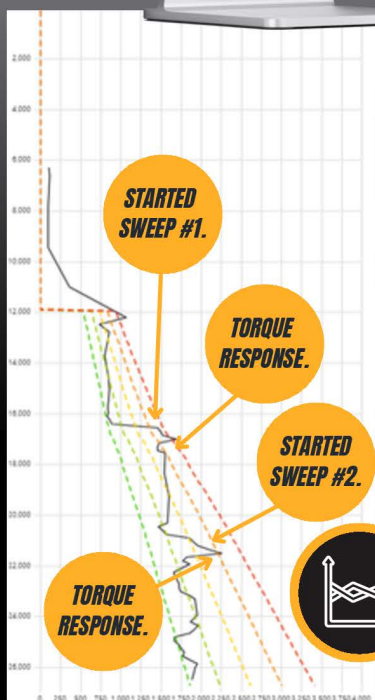
Edit, analyze, and certify data ranging from drill-out & wash duration to specific plug performances.

## MODELED TORQUE & DRAG SIMULATIONS

A patented process within BoreSite® allows modeled torque and drag simulations to overlap actual live drilling torque that results in substantial cost savings through chemical and fluid efficiencies.

Instantly compare friction factor sensitivity analysis trends vs. live chemical injection rates to better understand and manage wellbore debris and drilling ROPs.

Using overlapping T&D modeled vs real-time drilling data provides full clarity on Changing Downhole Conditions, and Circulation Programs To Optimize Downhole Performance.



## FIELD NETWORK SERVICES

Supported by BoreSite's® dedicated infrastructure for secure and reliable communication, we utilize satellite technology to deliver high-speed, low-latency internet connectivity in remote locations with zero reliance on third-party internet providers.

### **ZERO RELIANCE ON THIRD PARTY ISPs**

Ensures complete control over network operations and reduces vulnerability to external service outages.

### **INCREASED CYBERSECURITY**

Our firewalls protect data and systems, minimizing exposure to cyber threats.

### **HIGH-SPEED, LOW-LATENCY INTERNET**

Satellite technology guarantees fast and stable connectivity, even in remote or hard-to-reach locations.

### **ENHANCED OPERATIONAL EFFICIENCY**

Reliable internet access supports seamless communication and data transfer in the field.

## BORESITE® EDGE

Our Edge services provide an easy platform for handling data between all IoT devices on pad.



### **3RD PARTY DATA INTEGRATION**

Service provider agnostic, seamlessly integrating external data sources into BoreSite.®



### **EDGE COMPUTING**

Supports any IoT device on-site, enabling real-time processing.



### **DATA BROKERAGE**

Customizable data delivered to your preferred destinations.



### **WIRELESS COMMUNICATION**

Built-in wireless capabilities for robust connectivity.



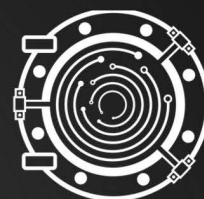
### **CLOUD-BASED DATA STORAGE**

Secure cloud storage with on-premises backup options.

## BORESITE® DATA VAULT

Maintain full internal control of your data through our BoreSite® Data Vault.

- This cloud-based portal delivers infinite secure data retention and is supported by Microsoft authentication; allowing you to access your historical well data anytime, anywhere.
- Row-level security - only able to directly access your data.
- Instant download capabilities including raw CSV formats for internal analysis.



**BORESITE  
DATA VAULT**  
CLOUD-BASED DATA PORTAL



# BORESIM TRAINING SIMULATOR

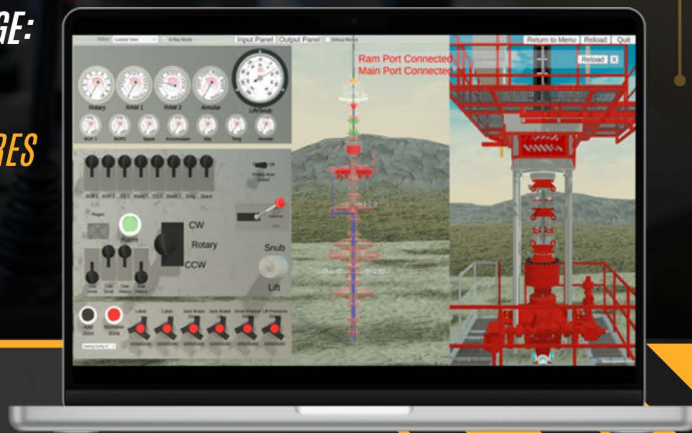
OUR INNOVATIVE, IN-HOUSE BUILT HCU TRAINING SIMULATOR PROVIDES A UNIQUE, ON-RIG EXPERIENCE WITHIN A SAFE, CONTROLLED ENVIRONMENT.

## WHY TRAIN WITH SIMULATION?

Entry-level new hires can integrate into the field with confidence, while more experienced employees can quickly learn how to safely maneuver new situations.

## BORESIM IS DESIGNED TO INCREASE EMPLOYEE KNOWLEDGE:

- SIMULATIONS TIED TO COMPETENCY CHECKLIST
- TROUBLESHOOTING OPERATIONAL & MECHANICAL FAILURES
- DIGITAL PROTOTYPING OF NEW SAFETY SYSTEMS



## KEY FEATURES



### X-RAY VIEW

- See collars and BHA components passing through the stack.

### BHA AND STACK CUSTOMIZATION

- For advanced design, planning, and dry-runs.

### 3D MODELS

- 3D models from as-built mechanical drawings of our most recent HCU.

### CUSTOM DESIGNED OPERATOR PANEL

- Our control panel simulates the layout of the actual on-rig operator panel, reducing the learning curve and providing safe and repeatable operations.

## CONTACT US:



boresite@deepwellservices.com



(724) 473 - 0687



boresite.io



[boresite.io](https://boresite.io)

719 W New Castle St, Zelienople, PA 16063  
Office: (724) 473-0687 | Fax: (724) 631-8660