

Deep Well Services is a Hydraulic Completion Unit (HCU) and workover company specializing in high-pressure, long-lateral, and multi-well completions. We consistently deliver safe and efficient results through top-tier talent, leading-edge technology, and partnerships built on trust and reliability.

## SAFETY - QUALITY - TRAINING

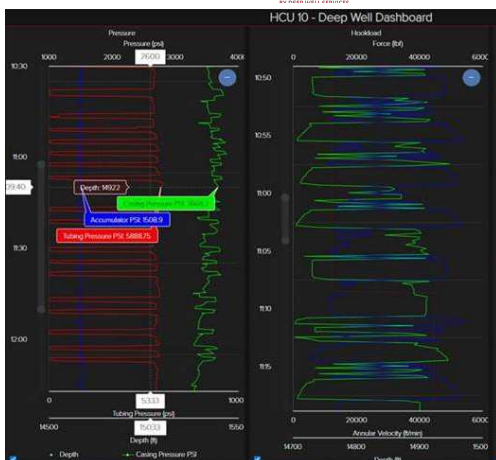


- ✔ 2020 TRIR 0.9 / DART 0.00 / Zero recordable spills
- ✔ Only Snubbing company in North America that is API Q2 & ISO9001: 2015 certified which governs all aspects of our business to guarantee quality and continuous improvement
- ✔ IADC accredited competency training program  
Field employees completed avg 40hrs training in 2020  
Snubbing simulator and fully-functional 300K on test well
- ✔ Training Department is led by a team with over 40 years combined international experience in snubbing, workover rig and safety

## OPERATIONS - EFFICIENCIES - SUPPORT

- ✔ Serviced 3,000+ wells completed in past 5 yrs
- ✔ Completed 574 wells in 2020
- ✔ Average fleet age = 4 years; HCU average age 2 years
- ✔ 99.3% up-time; 32hrs/NPT per 5,000 rig hours
- ✔ Pre-job planning by Safety, Operations, BD and Quality
- ✔ Over \$6.7M of critical spares, back-up equipment and contingency planning
- ✔ 24-7 fleet, operations, maintenance and safety support
- ✔ Engineering, field supervisors and superintendent supporting daily operations, complex jobs, and program discussions
- ✔ Currently holds North America record for longest completed lateral (20,780ft) and completed MD well (30,746ft)

## TECHNOLOGY - DATA - ESG



- ✔ Maximize efficiency, reduce cost, mitigate risk with real-time actionable data
- ✔ Industry-leading ERP ensures operational excellence every time
- ✔ Reduced chemical usage by 1/3
- ✔ Predictive well modeling solutions to prepare for any challenge
- ✔ Standardized post-well reporting and AAR process for continual improvement
- ✔ Decreased CO2 emissions on long-lateral drill out operations by 25% in 2020
- ✔ 95% success rate of meeting or exceeding our customer and DWS set KPI benchmarks
- ✔ Dedicated data analytics team and process to provide fact-based solutions