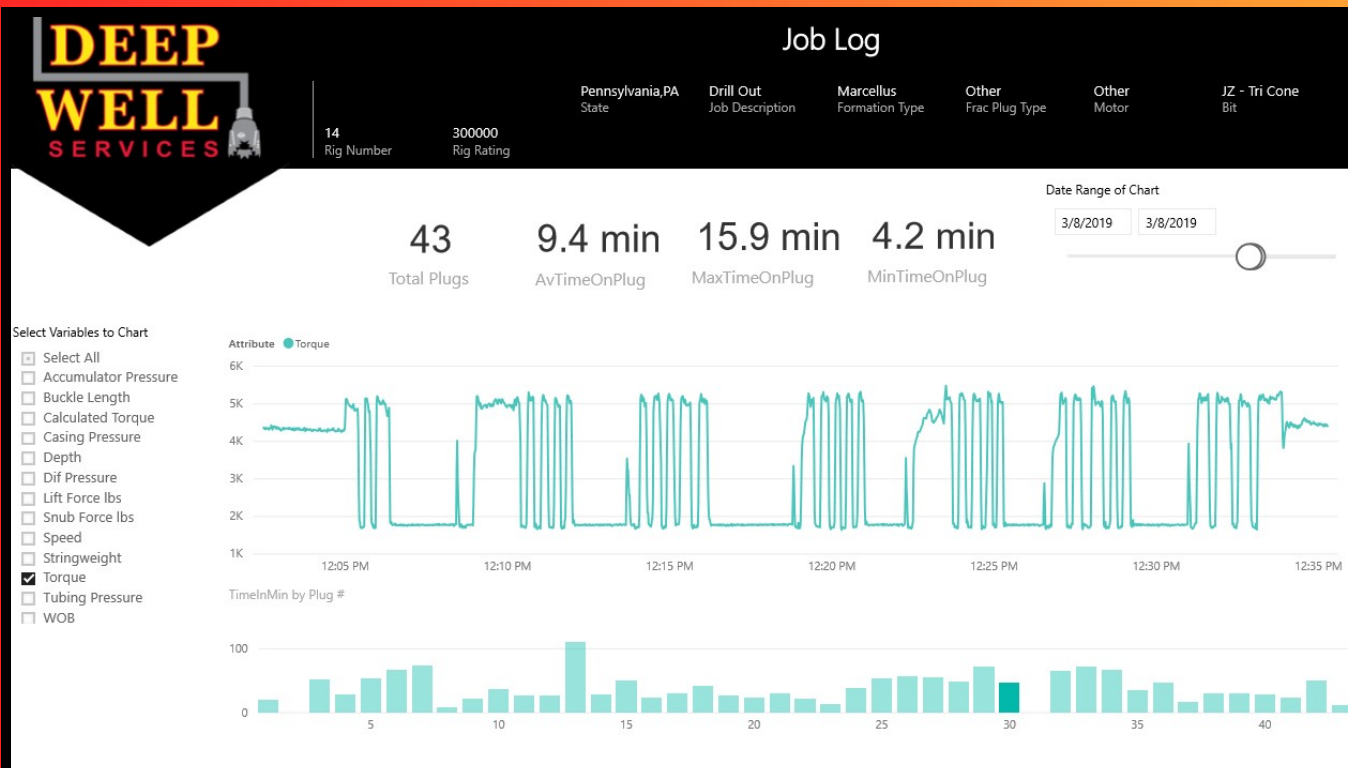


Our SNUBWELL<sup>SM</sup> engineering service is used for collecting and analyzing real-time data to optimize well drilling and snubbing operations

- Our Engineering Team creates custom post-job reports for well analysis leading to improved drill out efficiencies
- Ability to live feed onsite operational information via our mobile app
- Visibility of real-time KPIs (rig up, trip speed, plug drill time, etc.) allows immediate improvement to onsite rig performance



This system utilizes over a dozen different sensors to gather information such as:

- PU/SO hook load
- Tubing & casing pressure
- Rotary torque & RPM
- Differential pressure
- Depth
- WOB

For more information about our Snubwell<sup>SM</sup> engineering services, please contact Deep Well Services: 724-473-0687